



Flat 1, Hearthstone Field Oaks Way, Merstham, RH1 3FS
Asking Price £89,000

****30% SHARE****

A two bedroom first floor modern apartment offered to the market with NO ONWARD CHAIN, 25' x 15' kitchen/living room, fitted kitchen, family bathroom and allocated parking. The property is within walking distance to Merstham mainline railway station with good commuter links to London, Gatwick and the South coast and the M23/25 can be accessed at the Hooley Interchange Junction 7.

COMMUNAL FRONT DOOR

With entry-phone system giving access to first floor.

COMMUNAL HALLWAY

Leading to:

OWN FRONT DOOR

Leading to:

OWN ENTRANCE HALL

Radiator, power points, media point, smoke alarm, entry-phone system, thermostat for heating, storage cupboard housing electric fuse board and wooden shelving.

FAMILY BATHROOM

A white three piece suite comprising low level WC, pedestal wash hand basin, panel enclosed bath with mixer tap and shower attachment, part tiled walls, chrome heated towel rail, extractor, down-lighters, wall mounted shaver point and mirror.

KITCHEN/LIVING ROOM 25'1 x 15'7 (7.65m x 4.75m)

KITCHEN AREA:

A range of wall mounted and base level units, square top work surface, integrated 4 ring gas hob with integrated electric oven, space and plumbing for washing machine, stainless steel sink with mixer tap, wall mounted Worcester boiler, space for fridge/freezer, part tiled walls, concealed lighting, extractor hood, power points, side aspect Upvc double glazed window, breakfast bar, wood style flooring.

LIVING ROOM AREA:

Front aspect JULIET BALCONY with double Upvc doors, side aspect Upvc double glazed window, radiator, power points, continuation of wood style flooring.

MAIN BEDROOM 13'1 x 10'9 (3.99m x 3.28m)

Full height Upvc double glazed window, radiator, power points, telephone point, media point.

BEDROOM 2 15'11 x 9'0 (4.85m x 2.74m)

Full height side aspect Upvc double glazed window, radiator, power points.

ALLOCATED PARKING

COUNCIL TAX BAND C

30% SHARED OWNERSHIP

Rent payable £497.90 per month on the remaining 70% share

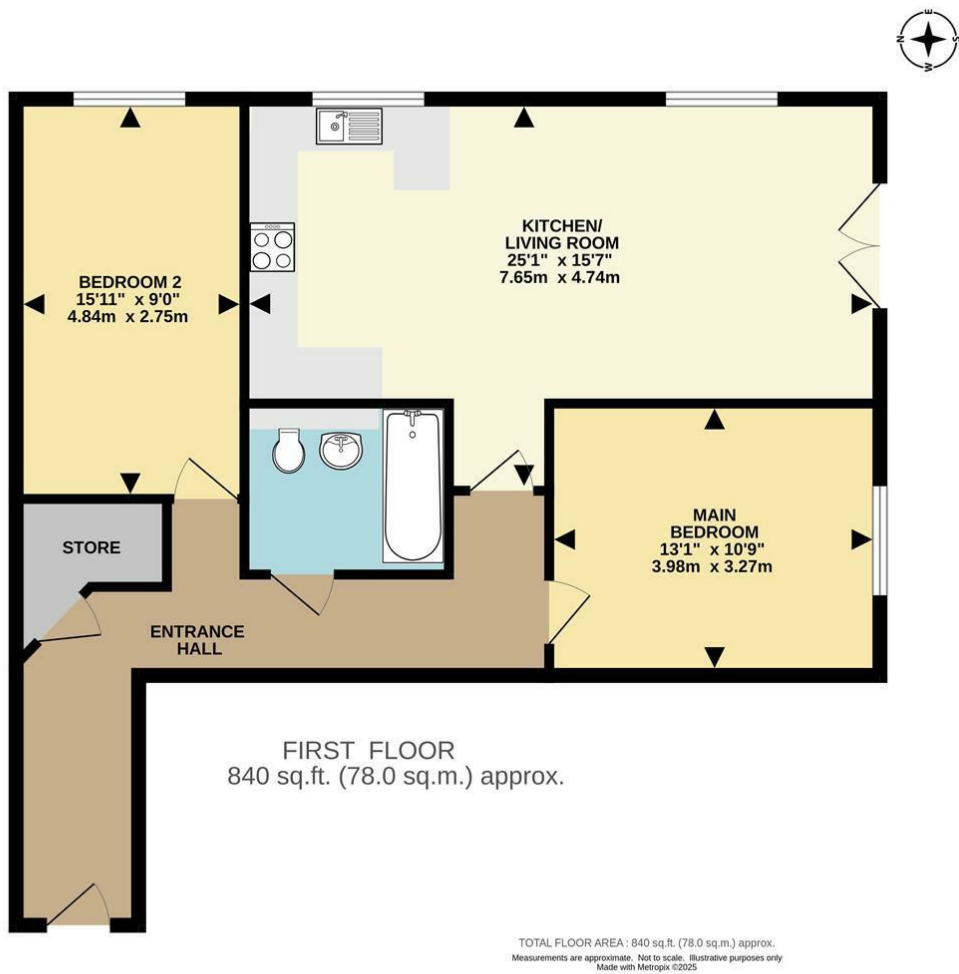
LEASE:

150 years from September 2016 (141 years remaining).

SERVICE CHARGE:

£188.57 per month - (£2262.84 per annum)

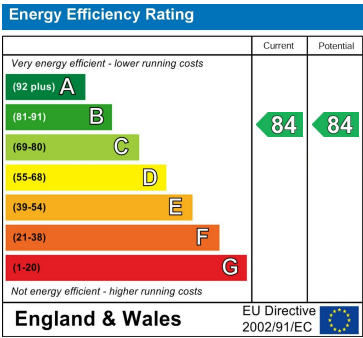
Floor Plan



Area Map



Energy Efficiency Graph



These particulars, whilst believed to be accurate are set out as a general outline only for guidance and do not constitute any part of an offer or contract. Intending purchasers should not rely on them as statements of representation of fact, but must satisfy themselves by inspection or otherwise as to their accuracy. No person in this firms employment has the authority to make or give any representation or warranty in respect of the property.